



Presented in English & Spanish

Global Spine Outreach Presents its 3rd Annual Spinal Deformity Symposium

October 22, 2016

Club de Industriales, México City

Program Chairmen:

Greg Mundis, Jr., MD
International Co-Chair

San Diego Center for Spinal Disorders
San Diego, California, USA

Anthony Rinella, MD
International Co-Chair

Illinois Spine and Scoliosis Center
Homer Glen, Illinois, USA

Mauricio Montalvo, MD
Local Co-Chair

Hospital Ángeles Lomas
Huiquilucan, Estado de México, México

Enrique Rosales, MD
Local Co-Chair

Hospital Angeles Acoxpa
México City, México

Registration: www.RegOnline.com/GSO2016

Register now, seats are filling up!

Keynote Speakers:



Behrooz Akbarnia, MD



Lawrence Lenke, MD

Spinal Deformity Symposium

October 22, 2016

Program Chairmen:

Greg Mundis, Jr., MD

International Co-Chair

San Diego Center for Spinal Disorders
San Diego, California, USA

Anthony Rinella, MD

International Co-Chair

Illinois Spine and Scoliosis Center
Homer Glen, Illinois, USA

Mauricio Montalvo, MD

Local Co-Chair

Hospital Ángeles Lomas
Huixquilucan, Estado de México, México

Enrique Rosales, MD

Local Co-Chair

Hospital Angeles Acoypa
México City, México

Invited Faculty:

Behrooz Akbarnia, MD

San Diego Center for Spinal Disorders
San Diego, California, USA

Lawrence Lenke, MD

The Spine Hospital
New York, New York, USA

Ra'Kerry Rahman, MD

Orthopedic Group Springfield Clinic
Springfield, Illinois, USA

Krzysztof Siemionow, MD

Illinois Spine and Scoliosis Center
Homer Glen, Illinois, USA

Selvon St. Clair, MD

Orthopaedic Institute of Ohio
Lima, Ohio, USA

Enrique Vargas, MD

Centro Médico Puerta de Hierro
Zapopan Jalisco, México



Dear Colleague:

Please join us for Global Spine Outreach's 3rd Annual International Symposium being held on Saturday, October 22, 2016 at the Club de Industriales in México City, México. The meeting will focus on the diagnosis and surgical management of commonly seen spinal deformity, including the latest treatment options and avoiding complications. Topics to include pediatric and adult deformity, surgical techniques and safety measures, with case presentations and hands-on workshops. The program will be presented in English or Spanish with translation for each language. The expert faculty will include leading spine surgeons from the United States and from México.

Visit www.GlobalSpineOutreach.org/Events for more details and www.RegOnline.com/GSO2016 to register as space is filling up!

We look forward to seeing you!

Sincerely,

M. Montalvo, MD

G. Mundis, MD

A. Rinella, MD

E. Rosales, MD

Program Co-Chairs



Who Should Attend

Program open to orthopaedic and neurological surgeons, fellows, residents, nurses, and allied health professionals with an interest in spinal deformity surgery in their practice.

Registration

Register online at www.RegOnline.com/GSO2016. All registration will be confirmed via email.

Fees (All participants)

Before October 22

\$100 USD

On October 22 onsite registration

\$125 USD

The registration fee includes entrance to the scientific sessions, breakfast and lunch, and course materials.

Course Location

Club de Industriales

Andrés Bello No. 29
Colonia Polanco, CP 11560
Ciudad de México, D.F., México
Tel: +52 55 5282 9500
Web: www.club.org.mx

Hotel Recomendation

Camino Real Polanco México City

Calz. Gral. Mariano Escobedo No. 700
Colonia Anzures, CP 11590
Ciudad de México, D.F., México
Tel: +52 55 5263 8888
Web: www.caminoreal.com

For Questions or Assistance

Please contact the GSO Meeting Planning Team:

USA Contact:

Email: Bridget@GSOoutreach.org
Tel: +1 (808) 285-6109

México Contact:

Email: Carolina@GSOoutreach.org
Tel: +52 (614) 427-4471

Website: www.GlobalSpineOutreach.org

All participants are invited to a fundraising cocktail reception following the symposium at the Club de Industriales. More information can be found at www.GlobalSpineOutreach.org/Events. Register at www.RegOnline.com/GSO2016.

Program

- 7:00 am **Breakfast**
- 7:50 am **Introduction and Welcome**
E. Rosales
- 7:55 am **Introduction to Global Spine Outreach**
A. Rinella

Session 1: Early Onset and Adolescent Idiopathic Scoliosis

- 8:00 am **Pediatric Deformity – Evaluation and Non-operative Management**
C. Mundis
- 8:15 am **Surgical Strategies and Techniques for Treating Early Onset Scoliosis**
B. Akbarnia
- 8:35 am **Classification of Adolescent Idiopathic Scoliosis**
L. Lenke
- 8:55 am **Perioperative Halo-Gravity Traction for Severe Scoliosis**
M. Montalvo
- 9:05 am **Q & A**

Pediatric Spinal Deformity – Case Presentations

Moderator: E. Rosales, MD

Panel: Drs. Mundis, Akbarnia, Lenke, Montalvo, Rahman

- 9:20 am **Case 1: Typical Pediatric Deformity**
- 9:30 am **Case 2: Complex Pediatric Deformity**
- 9:40 am **Discussion**
- 10:00 am **Refreshment Break**

Session 2: Adult Spinal Deformity

- 10:20 am **Sagittal Plane Parameters: What is Normal?**
A. Rinella
- 10:35 am **Choosing Fusion Levels in Adult Scoliosis**
G. Mundis
- 10:50 am **Applications of Lateral Approach**
K. Siemionow
- 11:10 am **Osteotomies to Restore Sagittal Balance**
R. Rahman
- 11:25 am **Discussion**

Adult Spinal Deformity – Case Presentations

Moderator: M. Montalvo, MD

Panel: Drs. Rinella, Siemionow, Akbarnia, Lenke, St. Clair

- 11:45 am **Case 1: Typical Adult Deformity**
- 11:55 am **Case 2: Complex Adult Deformity**
- 12:05 pm **Discussion**

Session 3: Instructional Workshop

- 12:30-1:30 pm **Instructional Course Lectures**

Session 4: Hands-On Surgical Training in México and Abroad (During Lunch)

- 1:30 pm **Global Spine Outreach – 15 year Celebration Video**
A. Rinella
- 1:45 pm **Global Spine Outreach in México**
G. Mundis
- 1:30 pm **Lunch**

Session 5: Safety in Spine Surgery

- 2:30 pm **Preoperative Considerations in Deformity Surgery**
S. St. Clair
- 2:45 pm **Neuromonitoring: Algorithm for Monitoring Changes**
L. Lenke
- 3:05 pm **Discussion**

Session 6: Surgical Techniques

- 3:20 pm **Free-Hand Pedicle Screw Technique: Approaches to Small Pedicles**
A. Rinella
- 3:35 pm **Techniques for Lateral Interbody Fusions**
G. Mundis / B. Akbarnia
- 3:55 pm **Vertebral Column Resection**
L. Lenke
- 4:15 pm **Discussion**
- 4:30 pm **Adjourn**

The program will be presented in English and Spanish.
Translation will be provided.
Program details are subject to change.

Commercial Support

Various Medical Companies have been invited to participate in this course. Full disclosure of support will be included in the course program materials.

Disclosure Policy

Global Spine Outreach promotes objective and scientific based education programs. All speakers are asked to fully disclose any and all relationships and all conflicts of interests will be addressed so that all information presented conforms to the generally accepted standards of experimental design, data collection, and analysis. Global Spine Outreach is committed improving quality in healthcare through education and outreach.

For additional information please contact:

Global Spine Outreach

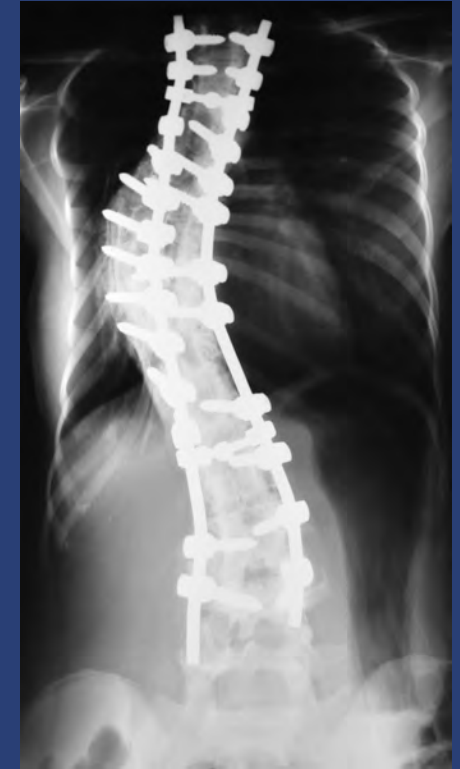
12701 W. 143rd St., Suite 200
Homer Glen, Illinois 60491 USA

Tel: +1 (866) 476-0880

Email: Bridget@GSOOutreach.org

Web: www.GlobalSpineOutreach.org

Global Spine Outreach is a US 501(c)(3) nonprofit organization



www.GlobalSpineOutreach.org/Events